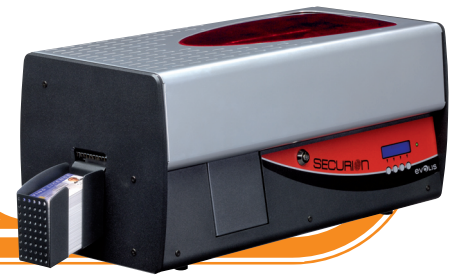


Badges that secure your **IDeas!**

Printing and laminating solution for highly secure badges

SECURION



The **Securion** is a one-stop solution for personalizing and laminating secure badges in a decentralized way. The printer seamlessly scales to meet growing concerns about security and data forgery, while greatly extending the lifespan of any card.

The printer offers dual-sided operations on both the color-printing module and the lamination station. The badge is first processed through graphical and electrical personalization. Then, a protection film, in the format of a varnish or a patch, is applied by a hot roller over the full card surface. Printing, encoding and laminating a secure badge are carried out in a single pass.

APPLICATIONS

Securion personalizes and issues durable, tamperproof ID cards:

- ID cards
- Driver's licenses
- Health insurance cards
- Access control badges



TOP QUALITY TECHNOLOGY AT AN AFFORDABLE PRICE

Securion's technology is unique: PVC cards are laminated with no damage or distortion as a result. This solution provides an attractive cost per card, greatly extends the lifespan of cards and offers foolproof security. Securion also supports the composite cards required for advanced and complex applications such as driver's licenses.

NEW AND HIGHLY SECURED LAMINATION FILMS

To cater to higher requirements in card security, Evolis offers an extended range of films, from basic varnish protection to patches with embedded holograms for maximum security.

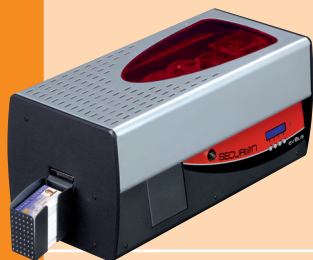


BENEFITS

- **Secure badges that last**
Securion's next-generation lamination station applies a varnish or patch-based protection film, and also manages holograms whenever required. Securion provides premium protection for badges, when it comes to security and durability.
- **Stunning graphics**
Securion comes with the leading dual-sided and color printing module in the market for an optimum print quality.
- **Versatile encoding options**
Securion supports advanced encoding options that can all be combined to cater to all encoding requirements, including the most sophisticated ones.
- **Highly secure operation**
Securion deploys additional layers of security to guarantee safe operation: a central locking system that prevents access to consumables (cards and ribbons), a password-based access to the machine and a slot for a Kensington® anti-theft system.

evolis
card printers

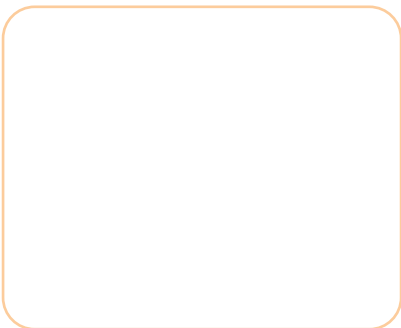
SPECIFICATIONS



PRINT MODE	<ul style="list-style-type: none"> Color dye sublimation and monochrome thermal transfer Enhanced color management system for top quality pictures Edge-to-edge printing Dual-sided printing
LAMINATION MODE	<ul style="list-style-type: none"> Full card varnish and patch films Dual-sided lamination Speed range: 2 mm/s to 18 mm/s (0.08 inch/s to 0.71 inch/s) Temperature range: 100° C to 180° C (212° F to 356° F)
ENCODING OPTIONS & ACCESSORIES	<ul style="list-style-type: none"> Encoding options (can be combined): <ul style="list-style-type: none"> Magnetic stripe encoder ISO 7811 HiCo/LoCo or JIS2 Smart contact station – ISO 7816-2 Smart contact station and encoding unit – PC/SC, EMV 2000-1 Contactless encoding unit – ISO 14443A, B, ISO 15693, Mifare, DesFire, HID iCLASS Other types upon request 100-card additional feeder: red, blue, green
RIBBON TYPES FOR THE PRINTER MODULE	<ul style="list-style-type: none"> 2-panel KO black monochrome ribbon – 500 cards/roll 5-panel YMCKO color ribbon – 200 cards/roll 6-panel YMCKO-K color ribbon – 200 cards/roll Half-panel YMCKO color ribbon – 400 cards/roll Monochrome ribbons – 1,000 cards/roll (black, red, green, blue, white, gold and silver)
FILM TYPES FOR THE LAMINATION MODULE	<ul style="list-style-type: none"> Generic thin holographic overlay film, full card – 350 and 400 cards/roll Clear patch 1 mil film – 200 cards/roll Clear patch 0.5 mil film – 200 cards/roll Alternate patch Front/ Back 0.5 and 1.0 mil – 100 cards/roll Special patches and thin overlay films upon request: holograms, security inks, custom cutting
PRINTING AND LAMINATING SPEED	<ul style="list-style-type: none"> YMCK-K, 1.0 mil patch single-side – 85 to 105 cards/hour YMCK, 1.0 mil patch single-side – 95 to 120 cards/hour
CARD FORMAT	<ul style="list-style-type: none"> ISO CR-80 – ISO 7810 (53.98 mm x 85.60 mm – 3.375" x 2.125")
CARD TYPE	<ul style="list-style-type: none"> All PVC, Composite PVC cards Lamination on regular PVC card, recommended with 0.5 mil patch or thin varnish
CARD THICKNESS	<ul style="list-style-type: none"> From 0.25 mm (10 mil) to 1 mm (40 mil) No lamination under 0.50 mm (20 mil), recommended from 0.76 mm (30 mil min.)
RESIDENT FONTS	<ul style="list-style-type: none"> Arial 100, Arial bold 100 Barcode – Code 39, 2/5 interleaved, Code 128, EAN13
SUPPORTED PLATFORMS	<ul style="list-style-type: none"> Windows™ XP and Vista 32 & 64 bits Other Windows™ versions, Macintosh™ OS X, Linux upon request
SUPPLIED SOFTWARE	<ul style="list-style-type: none"> eMedia Card Designer Software for designing and editing badges (30-day trial version): <ul style="list-style-type: none"> Compatible with Windows™ XP, Server 2003 and Vista 32 & 64 bits Connection to Microsoft™ Excel databases
INTERFACE	<ul style="list-style-type: none"> USB and Ethernet TCP-IP (USB cable supplied)
PRINTER FORM FACTOR	<ul style="list-style-type: none"> Without card hopper: 274.64 mm (10.81") (H) x 562.70 mm (22.15") (L) x 262.16 mm (10.32") (W) With card hopper: 274.64 mm (10.81") (H) x 658.20 mm (25.91") (L) x 262.16 mm (10.32") (W)
PRINTER WEIGHT	<ul style="list-style-type: none"> 15.4 Kg (33.15 Lbs)
POWER SUPPLY	<ul style="list-style-type: none"> Power supply: 100-240 V AC, 50-60 Hz, 2 A Printer: 24 V DC, 6.25 A
ENVIRONMENTAL CONDITIONS	<ul style="list-style-type: none"> Min/Max operating temperature: 15° / 30° C (59° / 86° F) Humidity: 20% to 65% non-condensing Min/Max storage temperature: -5° / +70° C (23° / 158° F) Storage humidity: 20% to 70% non-condensing Operating ventilation: free air
WARRANTY	<ul style="list-style-type: none"> 2 years (printer, lamination module, print head and lamination hot roller), or 100,000 inserted cards, whichever comes first⁽¹⁾

⁽¹⁾ Warranty Subject to observance of specific conditions and use of Evolis High Trust® consumables

© 2011 Evolis Card Printer. All rights reserved. Actual product(s) may differ from information stated in this document. All specifications or pictures are subject to change without prior notice. All trademarks mentioned herein belong to their respective owners. 10/2011. Images: Dalvez Admirc, Evolis, KB-SEC71-52USA



EUROPE, MIDDLE-EAST, AFRICA

Evolis Card Printer · 14, avenue de la Fontaine · Z.I. Angers Beaucoûzé · 49070 Beaucoûzé · France
 Tel: + 33 (0) 241 367 606 · Fax: + 33 (0) 241 367 612 · info@evolis.com

AMERICAS · Evolis Inc. · 3201 West Commercial Boulevard · Suite 110 · Fort Lauderdale
 FL 33309 · USA · Tel: +1 954 777 9262 · Fax: +1 954 777 9267 · evolisinc@evolis.com

ASIA-PACIFIC · Evolis Asia Pte Ltd · Singapore · evolisasia@evolis.com

CHINA · infochina@evolis.com

JAPAN · infojapan@evolis.com

www.evolis.com

