

TATTOO REWRITE INSTRUCTIONS

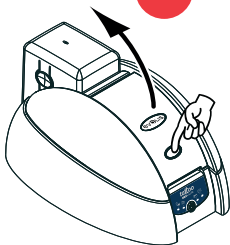
Cleaning the printer use cleaning cards

1



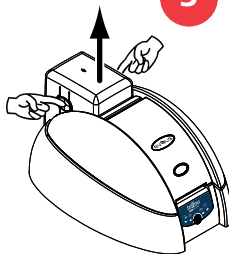
When a cleaning of the printer is required, the light indicated above turns on

2



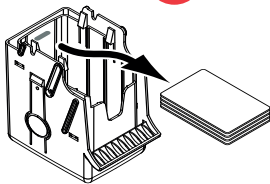
■ Open the printer cover and remove all remaining cards

3



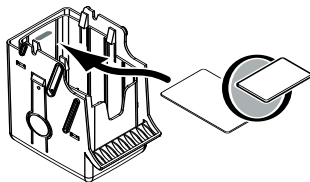
■ Remove the card feeder as shown

4



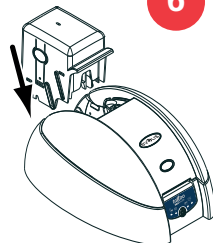
■ Remove all remaining cards from the feeder

5



■ Take a new cleaning card and load it into the feeder

6



■ Replace the feeder in the printer and press it down until it "clicks"

7

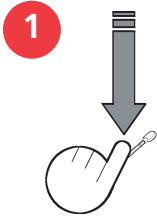


- Press the control panel push button for a second to start cleaning
- The cleaning sequence starts automatically and lasts a few seconds
- The used cleaning card is ejected from the front side of the printer
- The light turns off

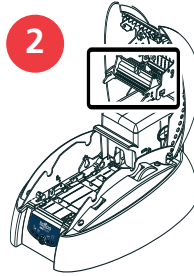


Wait a couple of minutes before using the printer to let the cleaning product evaporate completely

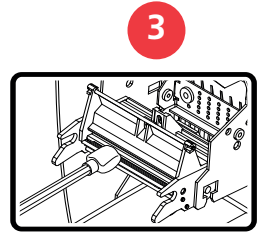
Daily cleaning Use cleaning swabs and cleaning wipes



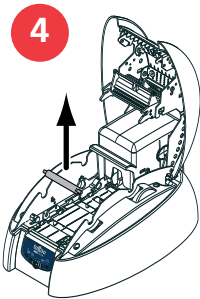
■ Take a new swab and press on the stick until the "click" to push the liquid out



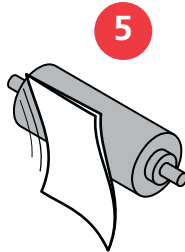
■ Open the printer cover and locate the printhead



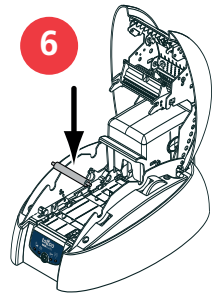
■ Rub the swab along and over the print head during several seconds



■ Open the printer cover and remove the cleaning roller



■ Take a new cleaning wipe
■ Remove dust by gently rubbing the wipe on the roller surface

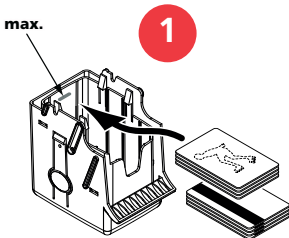


■ When dry, put the roller back in the printer and close the cover

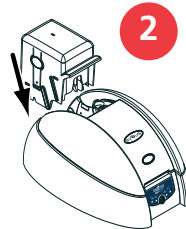


If you are using the card feeder, make sure you also clean the cleaning roller located at the feeder way out

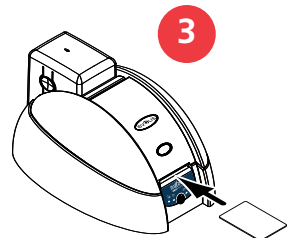
Loading cards in the card feeder (1-2) or in the front mouth (3)



■ Load cards into the feeder as shown



■ Replace the feeder in the printer and press it down until it "clicks"



■ Insert a card manually as shown in the front mouth